

Cabin Guide

Need anything?

Call or Text:

250-777-2559

Thanks for Booking the Keystone Cabin!

We are excited you are here and want to make this a fun and pleasant stay for you. We have provided this guide to help you with every detail you may need to know when staying at the Cabin. Please let us know ahead if you would like someone to meet you and help with directions or any other requests. We are happy to show you where to go and answer any other questions.

We highly recommend you arrive at least an hour before dark to get to the cabin in the daylight and have time to get oriented

A MESSAGE ABOUT COVID -19

We are still operating the cabin because we believe that it is important for people to be able to go into nature and also have a safe place to isolate. In order for us to continue allowing guests to visit the cabin, please DO NOT come to the cabin if you are experiencing any symptoms of illness, have been exposed to anyone with symptoms or have recently been travelling and have not finished your period of quarantine.

Getting Here

From Salmo: From the Salmo Esso head north on Highway 6 towards Nelson for 1.9 km (1.2 miles). Our driveway is the first left after Sheloff Rd. Look for a kids bike and some salmon on the poles next to the driveway. Our address is 8960 Highway 6. Across the highway you will see a red barn.

From Nelson: Head South on Highway 6 towards Whitewater and Ymir. After 39 km (24 miles) our driveway will be on the right. We are 3 driveways past Bonderoff Road. Look for a kids bike and some salmon on the poles next to the driveway. Our address is 8960 Highway 6. Across the highway you will see a red barn.

Parking and The Hike to the Cabin

When you come down the driveway turn left at the house and follow the road until you see the cabin parking sign. In the summer, you park at the end of the field, next to the frisbee basket. ***Note that in winter the parking will be closer to the house***

The Hike takes about 10 minutes and has 70' elevation gain. It is 0.7 km long. From your car walk towards the rail trail (sw). The cabin trail will almost hit the rail trail but as soon as you come out to it, look for the faint trail heading back into the trees parallel to the rail trail.

This next section of trail is part of the railway easement along the edge of our property so you will not see any signs until you get back onto the property. Soon you will be in some larger cedars and right up against our rock wall. The trail continues between the rail trail and the rock for a brief period and starts to climb slightly.

You will eventually see a no trespassing sign (which you can ignore) and shortly after that you will see a sign for the cabin trail.

*Please be very respectful as you walk through this section. The trail climbs above the boundary of our neighbours' property. If you have dogs (that wander) with you keep them leashed here. The trail should be straightforward from here (there is one jct. where you stay left to get to the cabin - right goes up to the trails and is labeled Green Bean) and shortly you will come out onto a 4wd road. Go down to the left and you will see the cabin. There is a map of the cabin trail on page 3 of this guide.

Link to Our Trails: <https://caltopo.com/m/5C89>

Cabin Basics

We hope you enjoy our cabin as much as we do. It has been a labour of love for us and we will continue to make improvements every year. There is a guest book inside if you have any comments or suggestions.

Getting In: You should have been given a code for the keypad. If you have any issues getting in the cabin please call us immediately and we will help you out.

Solar Lights: As soon as you enter the door, there is a small light switch on your right. Other switches can be found around the cabin, including one just up the loft stairs. Please be conservative and only have them on when you need them. If you are going outside, please turn them off. If for some reason you run out of solar power, there are battery powered lamps and extra batteries in a drawer.

Chargers: You will see two charging stations in the cabin where you can plug in your phone or other devices to charge.

Water - Summer: We will do our best to provide you with plenty of water for your stay. There will be several jugs of potable water for your use. If you are getting low, please let us know.

Water - Winter: We are unable to bring drinking water up to the cabin once our access road is covered in snow. There will be snow to melt for dishes etc. but only 2-3 gallons of drinking water will be provided. You will need to carry up drinking water for longer stays or if you have a big group.

Food: Please store your food either in the cooler provided or in the designated food drawer so as to not attract mice. Do not leave the cooler outside in the summer.

Cooking: We have a covered bbq right outside the door which has a burner on it. We also have a stovetop inside the cabin. Both are attached to the same propane tank, which you will need to turn on outside. Please also turn off the propane after you leave. When using the stove inside, crack the window next to it.

Beds: There is a queen futon and a bunk bed downstairs and a queen floor mattress in the loft. All bedding is provided and there are plenty of extra blankets.

Wood Stove: In the winter months, we will try to have a fire started in the wood stove before you arrive. There will be some wood provided next to the stove and more in the shed. Please do not use the stove during fire season.

Wildlife: We have seen black bears, moose, deer, turkeys, birds, squirrels, bats and coyotes on the property. We have seen signs of elk, wolves and cougar as well. Please be cautious and respectful. There is a bear spray in the cabin that you can take with you on walks.

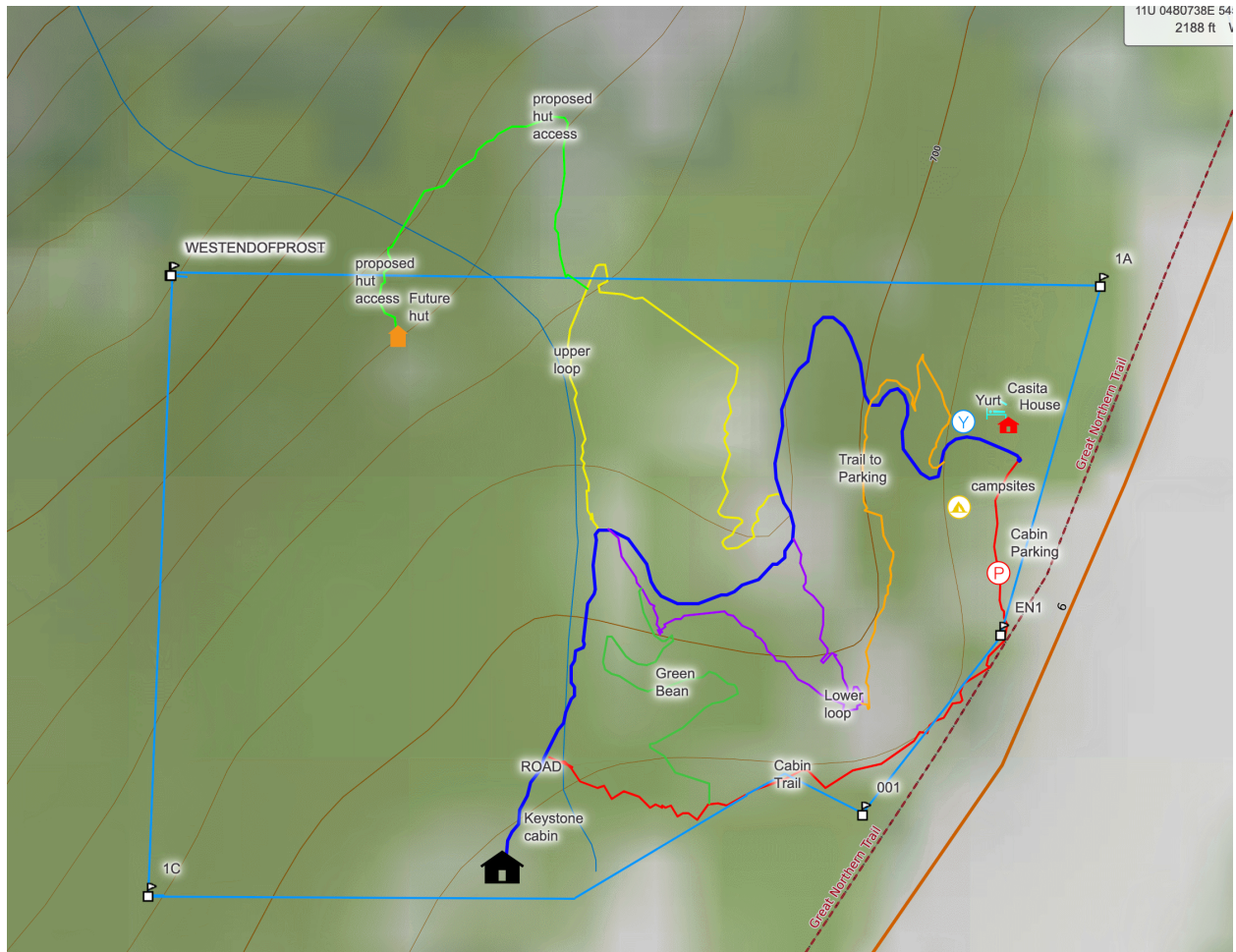
Outhouse: You passed the outhouse on your way to the cabin. It is just up the road on your right. There will be toilet paper in there already and there is backup in the cabin kitchen area.

Outdoor Fire Pit: Feel free to use the outdoor fire pit when there is not a fire ban. Keep your fires small and use the scrap wood in the box outside (please save our stacked wood for the wood stove) Please make sure it is fully out before you leave it unattended.

Showering: There are wash basins provided at the cabin and a battery powered camp shower outside for summer use. The charging cord for the shower pump is next to the back door.

The Trails

Map of Trail to Cabin



We have been working on a few trails on the property. There is a shorter and longer option, both with great views of the valley. If you head up the road you will access the trails. Anything below the cabin will quickly run up against our neighbours properties. Link to trail map: <https://caltopo.com/m/5C89>

About the Cabin

We named it Keystone cabin because it sits at the base of Keystone Mountain. All we really know about the cabin history is that it was built in the 50's by a man who lived by himself and fought in ww2. It was in very rough shape when we bought the property and we put a lot of work into fixing it up.

The cabin is furnished with some furniture that used to belong to my grandmother. She was an exceptional lady and a true pioneer. She grew up in the foothills of Alberta and spent much of her life living in off grid cabins.

There are a few pictures around of our family and their homestead. The wash basins and coffee pot also belonged to my grandparents.

If you would like information about things to do in the area please don't hesitate to ask us for recommendations.
Enjoy your solitude at the Keystone Cabin.

Remember to sign our guest book!